

University of South Florida
School of Architecture & Community Design

4202 East Fowler Avenue, HMS 301
Tampa Florida 33620
813.974.6014 (o)
813.974.2557 (f)
halflants@arch.usf.edu

www.studioformodernarchitecture.com

Education

- 05.1998 Master of Architecture
University of Florida, AIA Gold Medal Recipient
- 08.1995 Bachelor of Science (Engineering and Mathematics)
University of Central Florida, Magna Cum Laude
- 06.1994 Candidatures d'Architecture
Ecole Supérieure de St. Luc, Brussels, Belgium

Professional Registration

- 11.2002 Registered Architect, Florida State Board of Architects and Interior Designers
AR 91517

Creative Professional Work

03.2006 -
Present

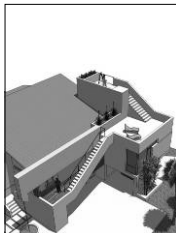
HALFLANTS + PICHETTE ARCHITECTS, Sarasota, FL
Lead designer for each project listed.

*Responsibilities: schematic design and design development including plans and digital model.
The production of the construction sets is assigned to other members of the office.
Solstice House Responsibilities: schematic design through construction administration*



(1)

Solstice House | 7142 Westmoreland Drive, Sarasota (1)
Construction administration completed under Halflants + Pichette. Design completed as a sole proprietor.



(2)

Bittner Addition | Siesta Key, Florida (2)
The addition facing the street collects the water from the existing single pitched roof. A 6 foot high sculptural gutter expresses the water collection. The addition conceals and stretches the perceived width of the house. Roof terraces offer views of the Gulf above adjoining properties.

Volk Residence | 4638 Bay Shore Road, Sarasota
While opaque to the West, the rotated house opens up on axis with the banyan. Elevated shaded terraces stretch the house to the assets of the site.



(3)

Finergy Main Street | 2170 Main Street, Sarasota (3)

The critical architectural component of the five story project is the resolution of the elevation giving the building unique identity within the fabric of the city. Two recessed spaces provide depth and mark the entrance and the two story penthouse office.



(4)

Wilson Residence | 1005 Tara Vista Drive, Sarasota (4)

Set in a live oak hammock, the house is designed for a retired contractor who asked for exposed raw construction. The palette of materials is limited to Cor-Ten steel infill panels, glass, and exposed precast concrete. Twelve feet wide double T's maximize the cantilevers over the site and over the deep swale. One such beam serves as an entry bridge into the house.



(5)

Popper Brooks Addition | 413 Blvd of the Presidents, St Armands

While the site has generous bay views, the existing house is separated from the water's edge by a plinth and a screened pool. The renovation removes the screen and carves a ten foot wide stair into the plinth. A thin folded roof shades a large exterior terrace to reconnect the house with Sarasota Bay.

Schikler Addition | 1666 Bahia Vista Drive, Sarasota (5)

The addition's roof matches the pitch of the existing house to provide an uninterrupted view of the bamboo clusters planted along the street. Together the new and the old form two courtyards. The parking court will be clad in stone, while the rest of the addition will be sheathed in zinc and glass.



(6)

SRQ Innovation Green – Project I

Developed a concept for an office in proximity to the airport. All of the services and core circulation are organized in a masonry spine facing the runways. Three conference rooms cantilevered out from the service wall to announce the secondary entries from the service parking area.

SRQ Innovation Green – Project II (6)

180,000 sq ft office building wraps around the parking garage to create a pedestrian space between garage and offices. The garage itself is wrapped and shaded by a perforated metal screen. The metal screen folds to shade the top floor, and an awning for a ground floor café. The elevations are designed with precast concrete panels and vertical slits of glass of modular widths.



(7)

Mould Addition | 208 North Polk Drive, St Armands

Two storey addition to a residence fronting St Armand's Canal. The addition is designed to take advantage of the view of a secluded bayou just north of the site.

Choucard Residence | Sarasota FL (7)

Located in a deed restricted neighborhood, the design was required to include tile roofs, a stucco finish, and punched openings. In our proposal, only the street elevation complies with the local restrictions. As such, the street elevation will serve as a mask to help a modern residence appease its neighbors. The roof is single pitched to the North. The northern rear elevation is extensively glazed to take full advantage of the views to a mature grand oak.

Hampton Inn | SRQ Airport

A conference center was added and the porte-cochere was designed as a continuous folded plane linking the hotel entrance to the new conference center.

Dietch Residence | St Armands FL

The constraints and issues raised by the tight site generated the basis for the Tropical Design course assignment in

Fingerhut Interior Stair & Mezzanine | 4632 Stone Ridge Trail, Sarasota

Custom mezzanine and steel stair steel stringer with in-laid cork flooring.

Panache Beauty Salon | Longboat Key, Florida

An 11' high elliptical blue tiled enclosure pushed close to the entrance contrasts with a low zebra wood clad cube in the rear of the salon.

Gonzales Medical Renovation | Venice FL
Renovation of an existing commercial facility

Paul Eckel Residence | Ontario, Canada
The two story sleeping quarters is wrapped in cedar on the North side. The lighter public quarters open up to the South and the lakefront.

08.2002-
02.2006

MICHAEL HALFLANTS ARCHITECT, Tampa FL
sole proprietor



(1)



(2)

Solstice House | 7142 Westmoreland Drive, Sarasota (1)
Rotated to look in the direction of the summer solstice's setting sun, the house boasts a roof that stair steps to catch dramatic views of Sarasota Bay. The roof's built-in stadium seating allows the owner to show outdoor screenings of her work and gives additional height to the living room below.

Terracotta Tower | 401 Orange Avenue, Sarasota (2)
Joint venture with the ADP Group- solely responsible for the design
Residential components were redesigned to emphasize the height of the tower and to unify the complex. On the most visible corner, the enclosure of the penthouse terrace captures the sky and becomes a visual anchor facing Main Street. On the same corner, the units are laid out with a two storey living space. These 2 storey volumes stagger locations to interlock with the units above and below. The project is designed to be built of concrete, glass, and terracotta.

Terracotta Townhouses | 401 Orange Avenue, Sarasota
Joint venture with the ADP Group- solely responsible for the design
At the back of the same tower and with the same material palette, three pairs of four storey townhouses line the face of the parking garage and mediate the scale of the tower with the adjoining neighborhood.

Lesur Residence | 1700 Bay View Drive, Sarasota
The L-shaped two story 4,000 sq ft house stretches to the outer limits of the setback lines to create a sheltered courtyard. At the corner, a roof terrace is shaded by mature pine trees. A privacy wall encloses the pines to create a second court. A third and smaller covered court serves as the entry. The narrow layout allows each space to have a direct access to the outdoors.

Florida Presbyterian Homes | 36 Terrace Gardens, Lakeland, Florida
Single Family Renovation

Florida Presbyterian Homes | 11 Terrace Gardens, Lakeland, Florida
The standard single family plan was rearranged to create an entry forecourt between the garage and the main house. Only the walls cradling the entry court were built of stone.

Florida Presbyterian Homes | 833-835 Lakeshore Drive Duplex, Lakeland, Florida
Using the site's natural contour, cantilevered terraces over the sloping site allow the wheelchair bound residents to overlook the pedestrian route. The adjoining double height dining rooms are separated by a theatrical party wall.

Florida Presbyterian Homes | Lakeside Court, Lakeland, Florida (4)
Using a few permutations with an L-shaped plan, courtyards with varying degrees of privacy were created between the 7 units. Each individual unit is identified by a two story living volume and an a concrete pergola. The community's path to the dining hall was redrawn to pass through the courts to maximize the interaction between the elderly residents.

Florida Presbyterian Homes | Cresap Apartments, Lakeland, Florida
Masterplan for a 30 apartment units assisted living.

01.2000
07.2002

GUY PETERSON FAIA / O.F.A., Sarasota, FL

Longboat Key Police Station, Longboat Key, Florida
Contributed to design and completed construction documents

Endoscopy Medical Center, Sarasota, Florida
Contributed to schematic Design, design development

Matt Residence, Casey Key, Florida
Completed construction documents

Ferguson Residence, Casey Key, Florida
Contributed to schematic Design, completed construction documents

Fishman Addition, Lido Shores, Florida
Contributed to schematic Design, completed construction documents

09.1999 -
12.1999

CARL ABBOTT FAIA ARCHITECTS & PLANNERS, Sarasota, FL

Duffy Residence
Contributed to construction administration

07.1998 -
08.1999

POLSHEK PARTNERSHIP ARCHITECTS, New York City, NY

Joseph Papp Public Theater Master Plan, New York
Project Designer

Joseph Papp Public Theater Administrative Wing, New York
Project designer through the design development phase

Brooklyn Museum Addition, Brooklyn, New York
Design team member in joint venture with Arata Isozaki & Associates

Spencer Museum, Kansas;
Project designer through schematic design

Biltmore Theater, New York
Project designer through schematic design

Circle in the Square Theater, New York
Project designer through schematic design

Design Honors

03.2008

SRQ | Home of the Year, Gold Medal
Independent architects from Miami reviewed the work of thirty-six design firms based in Sarasota and Manatee counties. The Solstice residence was awarded the Gold medal.

11.2007

Ringling College of Art & Design | Sarasota International Design Summit
The Solstice residence was in an architectural tour in the Ringling College of Art and Design's international design conference. The other featured projects were completed by five past and present acclaimed fellows of the AIA; Carl Abbott, Victor Lundy, Guy Peterson, Paul Rudolph, and Tim Seibert.

- 04.2007 University of Florida | Young Architect Award
The award is given annually to an alumnus who graduated within the previous 20 years and made significant design contributions in the architecture profession.
- 06.2006 Tampa Bay AIA | Design Honor Award
The American Institute of Architects Tampa Bay chapter invited an outside jury of architects from Boston to review 85 submissions from the seven counties around Tampa Bay.
- 06.2005 Eduardo Garcia Award Committee | AIA Garcia Award
The award is annually given to a registered architect 40 and under working within the seven counties around Tampa Bay. The portfolio submittals are reviewed by past recipients.
- 04.1998 University of Florida | Henry Adams Gold Medal
The Henry Adams recognizes 'the top graduating student and is the 'School of Architecture's highest design honor'.
- 04.1998 University of Florida | Thesis Exhibit
Permanent display in the department vice-chair's office
- 04.1997 University of Florida | Design Exhibit
Permanent display in the department chair's office
- 04.1997 University of Florida | Academic Achievement Award
Outstanding work in related areas of studies
- 04.1997 Design Honor Award
Creative achievement in design studio sequence
- 06.1993 Ecole Supérieure de St Luc | Annual Review
Work selected among 250 as the only 1st year project to illustrate the 1st year curriculum

Publications

- 2008 Architectural Record, upcoming issue
Received confirmation in August of an upcoming feature of Halfants + Pichette as emerging architects in Architectural Record, the world's largest architectural publication and the flagship magazine of the American Institute of Architects.
- 10.2008 Denton, Illene, Biz 941 / Sarasota Manatee Business, 'Commercial Designs of Distinction'
The Finery Main Street project was selected and featured as a commercial space of distinction.
- 06.2008 Architectural Record: WebInsider, Showcase: Residential
In an Architectural Record electronic newsletter, the Solstice Residence was featured as a headliner for the residential section. The newsletter is sent to every member of the AIA in the US.
- 06.2008 Bubil, Harold, "Solstice Residence" Sarasota Herald, June 21st 2008
The house was featured on the full cover of the Real Estate section on the day of the solstice.
- 06.2008 Reber, Nichole "Inside Design", Style Magazine, June 2008
6 page interview with fellow architects Javier Suarez and Gwen Leroy-Kelly.
- 04.2008 Greer, Dianne, Florida / Caribbean Architect Quarterly, Florida / Puerto Rico / Caribbean AIA Spring 2008 Issue
The Solstice House was featured on the cover and in a four page spread edited by Dianne Greer in the official magazine of the Florida / Caribbean American Institute of Architects. The quarterly magazine is distributed in every architecture office in Florida and Puerto Rico.

- 03.2008 Locklear, Gregory, "Home of the Year", SRQ Magazine, March 2008 Issue
Independent outside architects from Miami reviewed the work of dozens of design firms based in three counties. The Solstice residence was awarded the Gold medal and a two page spread.
- 01.2008 Halfflants, Michael, "Architecture of the Senses", SRQ Journal
January Issue, pages 38-43
- 11.2007 Alexander, Britta, "San Fran to Sarasota", SRQ Magazine, November 2007 Issue
Cover and 6 pages spread in the home issue of the monthly Sarasota magazine.
- 10.2007 Bowen, Anastasia, 'Defining architectural Innovation', Sarasota Herald-Tribune
October 14, 2007
- 03.2007 Allen-Jones, Patty, "Student Architects' Designs Garner Praise", Sarasota Herald-Tribune
March 21 2007
- 11.2006 Bubil, Harold, "Architecture in the Community", Sarasota Herald-Tribune
November 1, 2006
- 05.2006 Halfflants, Michael, iNTA Conference Proceedings, Jogjakarta, Indonesia
The international conference provided a platform for researchers and practitioners in the tropical and subtropical belts.
- 01.2005 Weaving, Andrew, The Renovated Home, Harper Collins Press, 2005
The Fishman Residence Addition completed with Guy Peterson was featured on the cover and in each chapter.
- 07.2005 Van Sikler, Michael, "Cities strain to see future" St. Petersburg Times, July 29 2005
Article features work produced by the summer design studio
- 09.2004 Green, Stephanie "SG to Poll Students about 9/11 Memorial", The Oracle, Sept. 22 2004
Article on the collaborative project between Architecture and Fine Arts to design a memorial.
- 11.2003 Czarnecki, John, "Biltmore Theater returns." Architectural Record, November Issue 2003
Features the Biltmore Theater renovation | project designer with the Polshek Partnership
- 09.2003 Dunlap, David "For Venerable Theater, It's a Body Transplant." New York Times, Sept. 23 2003
Features the Biltmore Theater renovation | project designer with the Polshek Partnership
- 10.2003 Hoffman, Barbara, "Biltmore Back in Business." New York Post, Oct. 16 2003
Features the Biltmore Theater renovation | project designer with the Polshek Partnership
- 10.2003 Matus, Ron, "Students are natural resources for ideas" St. Petersburg Times, October 03 2003
Article on a studio's proposals for a new bird observatory for the McKay Preserve
- 07.2003 "Promising plan for Sulphur Springs", Editorial, Tampa Tribune, July 25 2003
Article on a studio's public presentations of proposals for a library and public park
- 07.2003 Allen-Jones Patty, "Change and the City" Sarasota Herald Tribune, July 20th 2003
Article on the Main Street Sarasota projects produced and presented by the Design III studio
- 04.2003 Binette, Chad, "A study in museum design" Sarasota Herald Tribune, April 30, 2003
Article on a studio's proposals for an addition to the Ringling Museum.
- 09.2002 Allen-Jones Patty, "Students design bus terminal" Sarasota Herald Tribune, September 21, 2002
Article on a studio project pertinent to the local community and reviewed in the city chambers.
- 09.2002 Ardren, Bob, Sarasota SCAT Station, Pelican Press, September 19, 2002
Article on a studio project pertinent to the local community and reviewed in the city chambers.

Grants & Research Activities

- 03.2007 **USF Polytechnic | Lakeland**
Under the leadership of Dr. Gregory Paveeza, the satellite campus financially supported and exhibited the studio's master planning projects.
- 09.2006 **Shalimar Sanctuary and Fellowship Hall | Funding toward student scholarship**
The Advanced Design B studio was sponsored by the Shalimar Church to design a new sanctuary and education building.
- 01.2005 **School-Wide Charette | Funding toward student scholarship**
Organized the school-wide design charette to replace Punta Gorda's Presbyterian Church ravaged by Hurricane Charlie. The congregation financially sponsored the charette through scholarships.
- 02.2004 **Seminole Heights Urban Master Plan**
Coordinated with research assistant David Hugglestone the documentation of a master plan for the Seminole Heights Area into a concise structured document. The urban study of Seminole Heights was reviewed by members of the Planning Commission and by the architectural community.
- 01.2004 **Children's Environments Conference | Principal Investigator USF Internal Grant Award**
The intent of the conference was to bring together and incorporate concepts of early child development including social, emotional and cognitive development, the concepts of proximal environment of the child, the understanding of the concepts of neighborhood, community and social learning as a basis for the architecture and design of preschools.

Co-chaired the conference with Dr. Stan Graven. Participants interacted with German and Norwegian architects, architecture professors from across the country, community activists, and educational experts to generate plans for an experimental preschool.
- 10.2003 **McKay Bay Tower | Funding toward student scholarship**
Students were to design an addition to an existing pavilion on the McKay Bay Preserve. The studio was enlisted to undertake the study by the City's Parks Department. Wheelabrator Co. financially sponsored the studio through scholarships.
- 07.2003 **Florida AIA Convention | Interdisciplinary Design Charette**
At the annual Florida AIA convention, students were teamed up with community leaders, Florida State senators, City of Sarasota planners, and architects from around the state to examine the newly drafted downtown core master plan. The result of the collaboration led to important revisions of the downtown zoning code.
- 06.2003 **Sarasota Main Street Analysis | City of Sarasota Sponsored Studio**
The City of Sarasota's Planning Department contributed funds to create an exhibit and document the urban study undertaken by the design studio. The work produced in the studio tested and illustrated the architectural and urban design implications of the proposed zoning code.
- 02.2003 **USF Memorial Competition | USF Student Government**
In collaboration with Fine Art faculty members, architecture and art students competed for the commissioned design of a campus memorial. The funding was later discontinued.
- 10.2002 -
08.2003 **Sarasota School of Architecture Symposium | Sarasota Fine Arts Society Funding**
Organized and edited with Prof. Lyn the proceedings of the 2001 Sarasota School Symposium.

Presentations

- 10.2007 **Emerging Professional Conference** | Florida AIA
Discussed the challenges and opportunities in bringing light rails to coastal counties.
- 04.2006 **Garcia Lecture Series** | Tampa Bay AIA
Invited speaker as the 2005 Garcia Award recipient to present professional work
- 10.2005 **"Art in the Public Realm: Perspectives" Symposium** | USF Fine Art and Humanities
Invited speaker in a national forum on public art.
- 10.2002 **USF Globalization Symposium** | USF Humanities
Invited speaker

Teaching

08.2003 - 08.2008 Assistant Professor, University of South Florida, School of Architecture & Community Design

Existing Courses Taught (semester system)



(I)

- Materials and Methods of Construction | graduate required course
Introduced a collaborative hands-on full-scale construction project to encourage students' understanding of the weight of the materials, their connection, and the processes of design and fabrication. The success of the project lied in a demarcation between builders and designers to sharpen the students' understanding of the relationship between what is drawn and what is built, and in the design opportunities discovered at the full scale of the material.
(I) Miguel Arango; Carrie Cogsdale; Phat Nguyen; Daniel Uebler



(II)

- Core Design III Studio | graduate second year core studio course
- Advanced Design A Studio | graduate second year advance studio course
- Advanced Design B Studio | graduate third year advance studio course
- Advanced Design C Studio | graduate third year urban studio course
- Master's Project Planning | required terminal project planning course
- Masters Project | masters project chair for 16 students

New Courses Developed & Taught



(III)

- Critical Reconstruction | graduate urban design elective (II) Daniel Bernal
The course examines the fundamental urban responsibility of buildings as they shape the spaces of the city. The intention is to define and reinforce the genius loci of a city. The class worked with professional planners to complete projects of varying scales and density.
- Advanced Design D Studio | master's project option (III) Tim Knowles
Redrafted the school's terminal project guidelines to differentiate between the new Design D track and the existing independent track.



(IV)

- Tropical Design | graduate level design elective (IV) Lidya Angelova
The course examines the technical use of passive cooling strategies through precedent research. Students investigate the design implications of sound passive cooling in a residential assignment. In the designs, every effort is made to engage the senses and limit the need for conditioning.

08.2002 - 07.2003

Sam Gibbons Visiting Professor, USF School of Architecture & Community Design

Existing Courses Taught (semester system)

- Materials and Methods of Construction (graduate required course)
- Advanced Design A Studio (graduate second year advance studio course)
- Advanced Design B Studio (graduate third year advance studio course)
- Masters Project (masters project chair for 4 students)

New Courses Developed & Taught

- Digital Design (graduate level elective)
A seminar class centered on the digital media tools and their design impact

06.1996 - 12.1997 Graduate Teaching Assistant, University of Florida, College of Design, Gainesville, FL
Assisted in teaching five consecutive undergraduate and graduate design studios

Teaching Distinctions

- 09.2008 **Florida Foundation for Architecture** | Florida Cottage Design Competition
Karina Cigagna's Tropical Design project was selected as a finalist in a Florida AIA competition. Her entry will be displayed at the Annual Emerging Professionals Conference held in Miami.
- 06.2008 **National American Institute of Architecture Students** | House of Freedom
Thesis advisee Christine Sanchez placed third in the national competition on elderly housing.
- 09.2004 **City of Portland** | Living Smart Design Competition
Entry completed by Bill Berry & Alexi Kavarokiris in design studio was selected for the City of Portland's publication. Winning entries selected from Australia, the US, and Europe.
- 03.2003 **National Association of Home Builders Research Center** | Aging in Place Competition
The NAHB Research Center published three exemplary projects from the Fall 2002 Advanced Design B studio. 115 students from 15 schools participated.

Teaching Exhibits

- 05.2007 **Selby Gallery** | Sarasota
Spring 2007 studio on exhibit in a joint architectural display with architect John Howey, FAIA.
- 03.2007 **USF Polytechnic** | Lakeland
The satellite campus exhibited the studio's master planning projects.
- 10.2006 **Gala Corina** | Ybor City
Materials and Methods' large scale productions were centrally featured in three annual exhibits.
- 11.2005 **Waterworks Building** | Sarasota
Work from the advanced design D studio was on display alongside work completed by AIA Gulf Coast Chapter architects.
- 04.2005 **USF Globalization Center** | Tampa
Nutan Apte's thesis project was on exhibit in the Center for International Studies.
- 09.2003 **City Hall Gallery** | Sarasota
The City of Sarasota's Planning Department contributed funds to create an exhibit and document the urban study the summer DIII students had undertaken.

Teaching Collaboration

- 02.2004 **Children's Environments: Advance Design A**
Co-taught a studio assignment on preschool design with Professors Stan Graven, Interim Dean of the College of Public Health, and Peter Gorski, director of the Chiles Center. Students participated in the 2004 "Children's Environments" conference organized by Dr. Graven and Michael Halfants.
- 02.2003 **USF Memorial Competition**
In collaboration with Fine Art professors Richard Beckman and Rozalinda Borcila, and USF Public Arts coordinator Vincent Ahern, architecture and art students teamed up to compete for the commissioned design of a memorial on campus.
- 09.2002 **Elderly Housing: Advance Design B**
Collaborated with Dr. Jim Mortimer, director of USF's Aging Studies, to run an elderly housing study for the Belmont Heights Area in the fall 2002 semester.

Instruction Related

- 01.2008 **Study Abroad, Mexico City** Spring 2008
Led students through Teotihuacan, the Spanish colonial city of Puebla, early 20th century work of Barragan and O'German, the 1960's avant-garde of UNAM, and Alberto Kalach's National Library.
- 06.2005 **Study Abroad Program Director, Northern Europe** Summer 2005
The itinerary focused on urban infill projects including Rotterdam's Kop van Zuid District, Amsterdam's new housing islands, Breda's Chassé Factory site, Berlin's Postdamer Platz, Lille's Euralille's District, and Maastricht's Ceramique Plein.
- 09.2004 **Study Abroad, Yucatan, Mexico** Fall 2004
Led two studios on a tour of Haciendas, Mayan Ruins, and through the urban fabric of Merida.
- 02.2002 - present **Design Juries**
Participated on 47 design Juries at USF's School of Architecture.
- 04.2007 **Visiting Critic, College of Design, University of Florida**, Gainesville FL
Reviewed Thesis projects for Professors Robert McCarter and Martin Gundersen
- 01.2005 **School-Wide Charette**, Spring 2005
Organized a school-wide design charette to replace Punta Gorda's Presbyterian Church

Studio Field Study

- o Los Angeles | Spring 2007
- o Phoenix | Spring 2006
- o Chicago | Fall 2005
- o New York | Fall 2003
- o Houston / Dallas | Spring 2003

Service

08.2002 -
present

UNIVERSITY OF SOUTH FLORIDA

Admissions & Advising:

Portfolio Review Committee Chair (2004 through 2008)
Reviewed applications for advanced placement (2005 through 2008)
Academic Adviser for an average of 30 students (2002 through 2007)

Exhibits & Lectures:

Organized school wide annual exhibits at Tampa Bay AIA's downtown gallery (2007-2008)
Set up the Tugendhat House exhibit (2007)
Organized lectures by Kristin Jarmund of Oslo and Christian Kandzia from Stuttgart (2004)
Initiated and organized a lecture series with prominent Florida practitioners (2002-2003)

Faculty Search Committee Spring 2004, 2006, 2007, 2008

Chair: Professor Steve Cooke

Dean Search Committee Spring 2005

Chair: Dean Ron Jones

Faculty Search Chair Spring 2004

Sam Gibbons Visiting Professor

National Architectural Accrediting Board (NAAB) Spring 2005

Set up three course exhibits and prepared four course folders for the accreditation team to review.

Building Search Committee Fall 2003

Searched alternate downtown accommodations

USF Public Art Selection Committee

College of Public Health / University Galleries

USF Preschool Design Committee

USF College of Public Health / Chiles Center

USF Internal Awards Review Committee

2003-2006

PROFESSIONAL & COMMUNITY SERVICE

Sarasota Architectural Foundation, Board of Directors 2007 / Vice Chair 2008

Initiated and organized the 'Architecture and Aperitifs' bi-monthly events to showcase design distinction. The Sarasota Architectural Foundation focuses on the preservation of the Sarasota School of Architecture structures, and the promotion of architectural excellence.

Florida AIA Emerging Professional Conference, October 2007

Discussed the challenges and opportunities in bringing light rails to coastal counties.

AIA Eduardo Garcia Award Committee, 2005 - present

Participated in organizing a professional lecture series in Tampa Bay with fellow award recipients. Responsible to design the call for entries and set up reviews in 2006 and 2007

Sarasota Children's Museum Fundraiser, 2005-2007

Participated among architects and community members in the museum's annual fundraisers

French-American Business Council of West Florida, Board of Directors 2005-present

Organized cultural events at contemporary galleries and museums. Set up the Sarasota Chapter.

enVISION-ing democratic space, competition juror October 2005

Reviewed architectural competition winners sponsored by the Gala Corina organizers.

Hillsborough County Planning Commission Presentation, Fall 2005

Presented the work of past public and private joint ventures completed at the school.

Seminole Heights Master Plan Presentation, Spring 2004

Presented comprehensive document to the Seminole Heights Business Association.

Sarasota City Commission, February 11th 2004

Made a public presentation in support of a modern sustainable housing design in Sapphire Shores.

PROFESSIONAL & COMMUNITY AFFILIATION

- o American Institute of Architects Tampa Chapter
- o Sarasota Architectural Foundation, Vice Chair
- o Tampa Bay Eduardo Garcia Award Committee
- o Green Building Council
- o Sarasota French Alliance
- o Sarasota Arts Council
- o Sarasota Young Professional Group
- o Sarasota Chamber of Commerce
- o French American Business Council of West Florida
- o Seminole Heights Land-Use Committee (2003-2005)
- o Hillsborough River Round Table (2003-2004)
- o Sapphire Shores / Indian Beach Neighborhood Association (2002)